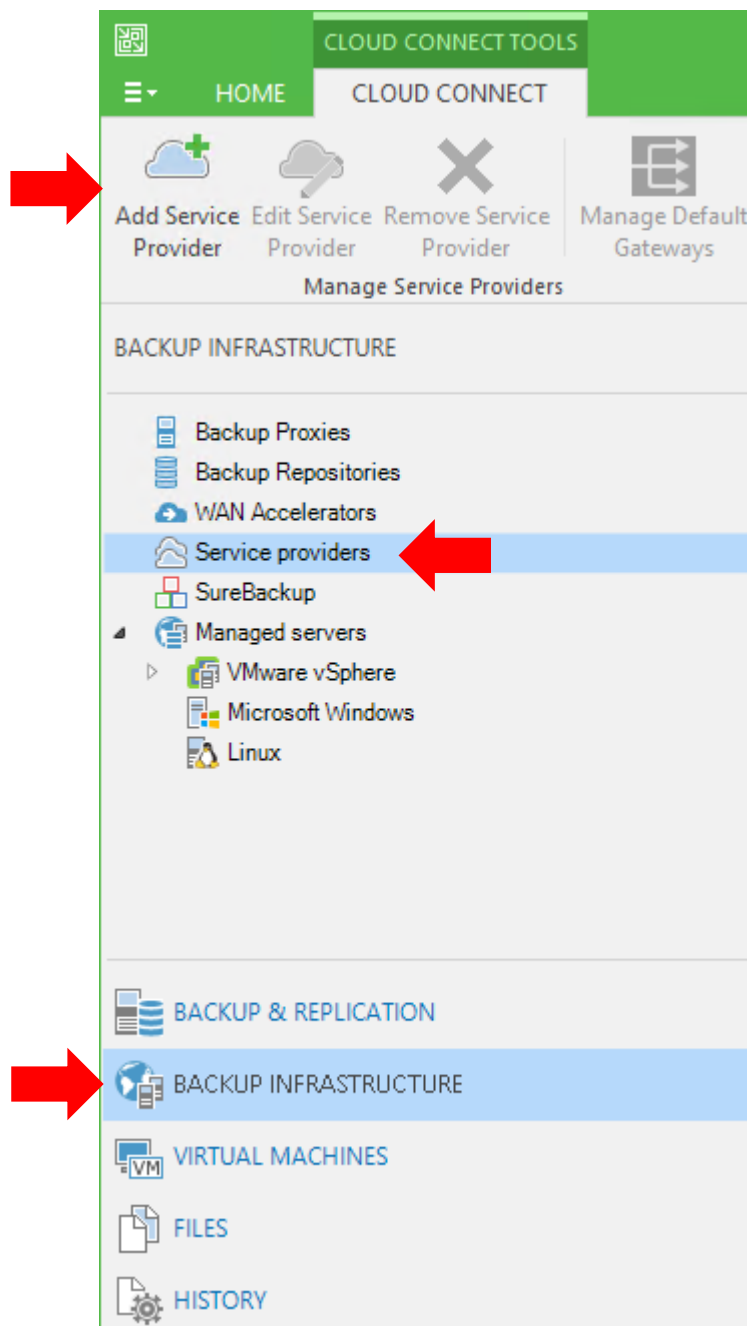




How to connect to DC Two Veeam Cloud Connect

Follow these steps to enable you to connect to the DC Two Veeam Cloud Connect platform.

1 – Open your Veeam Backup and Replication Console and Navigate to “Backup Infrastructure” then select “Service providers” then “Add Service Provider”



2 – Now enter the DC Two DNS name to connect to which is “cloudconnect.dctwo.com.au”. Leave the other settings as default. Then click “Next”.

Service Provider

Type in DNS name or IP address and a port number received from the service provider. If you are using more than one service provider, add a custom description to more easily distinguish between them.

Service Provider

DNS name or IP address:
cloudconnect.dctwo.com.au

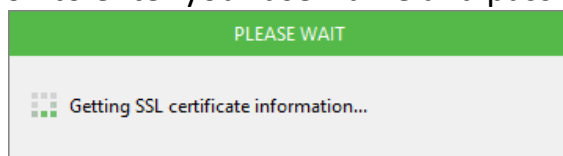
Description:
Created by DCTWO\backupadmin at 26/09/2016 11:16 AM.

Port:
6180

Allow this Veeam Backup & Replication installation to be managed by the service provider
Select this check box if you have managed backup contract with the service provider you are adding, and want to allow it to manage your installation automatically.

< Previous **Next >** Finish Cancel

3 – Veeam will then retrieve the DC Two SSL certificate and confirm. Then select “Add” under the credentials section to enter your username and password.



Service Provider

Specify credentials that you have received from the service provider, and validate the certificate.

Service Provider

You have connected to service provider cloudconnect.dctwo.com.au

Verified by: [CN=RapidSSL_SHA256_CA - G3, O=GeoTrust Inc., C=US](#)

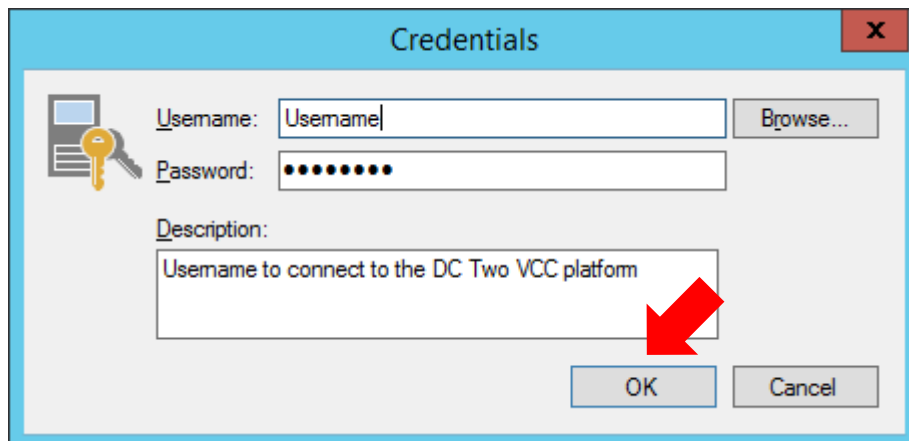
Thumbprint for certificate verification:
Certificate is verified by third party. Verify

Select credentials issued to you by the service provider
Credentials: **Add...**

[Manage accounts](#)

< Previous **Next >** Finish Cancel

4 – Enter your Username and Password and a description that will make sense to you later then click OK to continue.

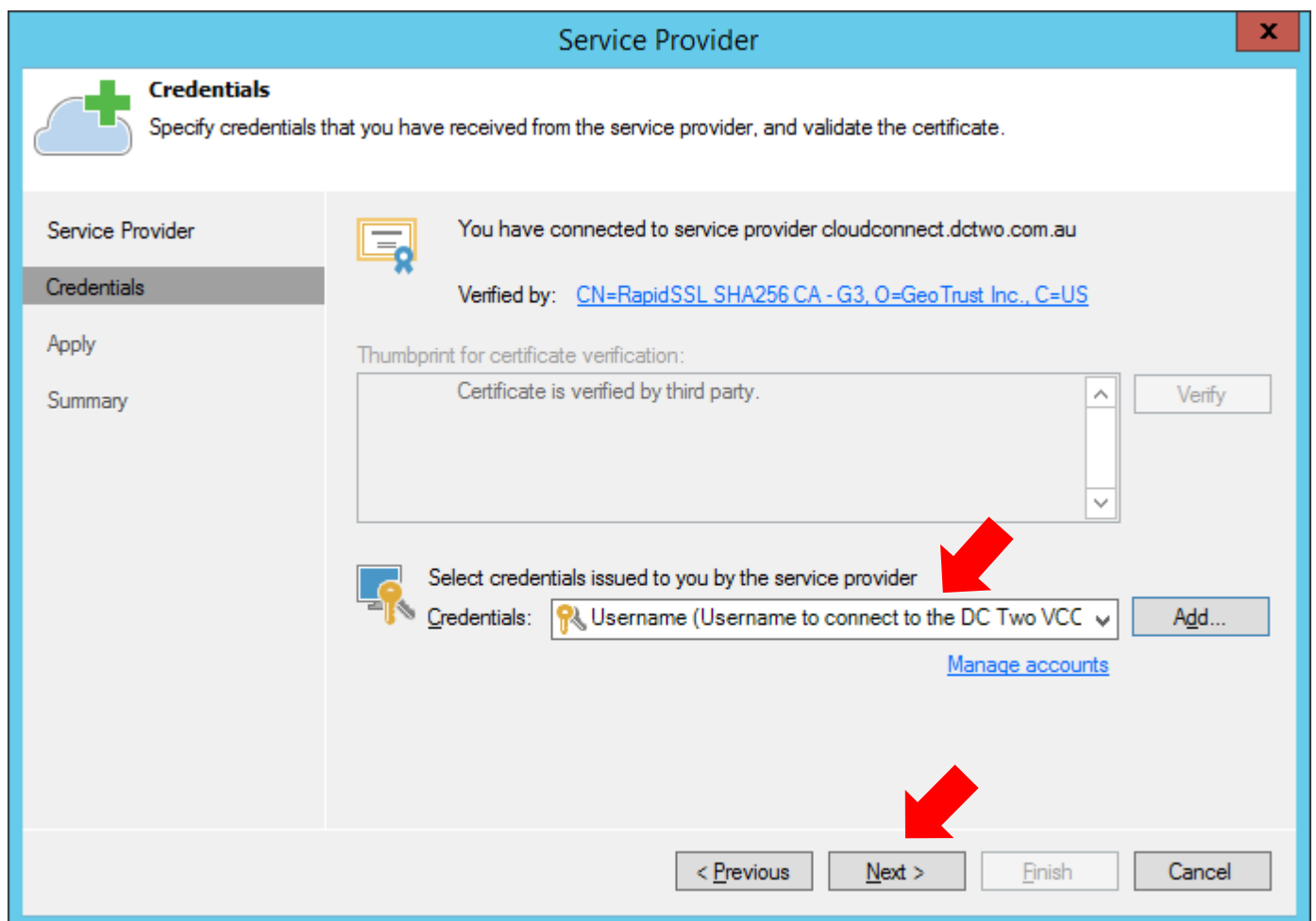


The screenshot shows a 'Credentials' dialog box with the following fields and content:

- Username:** Username
- Password:** [Masked with dots]
- Description:** Username to connect to the DC Two VCC platform

Buttons: OK, Cancel. A red arrow points to the OK button.

5 – The new credentials entered will be added to the Veeam Credentials manager and should automatically be selected in the Credentials drop down box as below. Then click “Next” to continue;

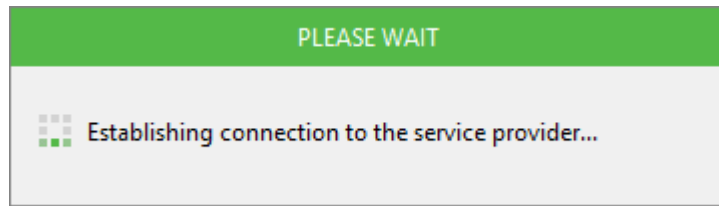


The screenshot shows the 'Service Provider' dialog box with the following elements:

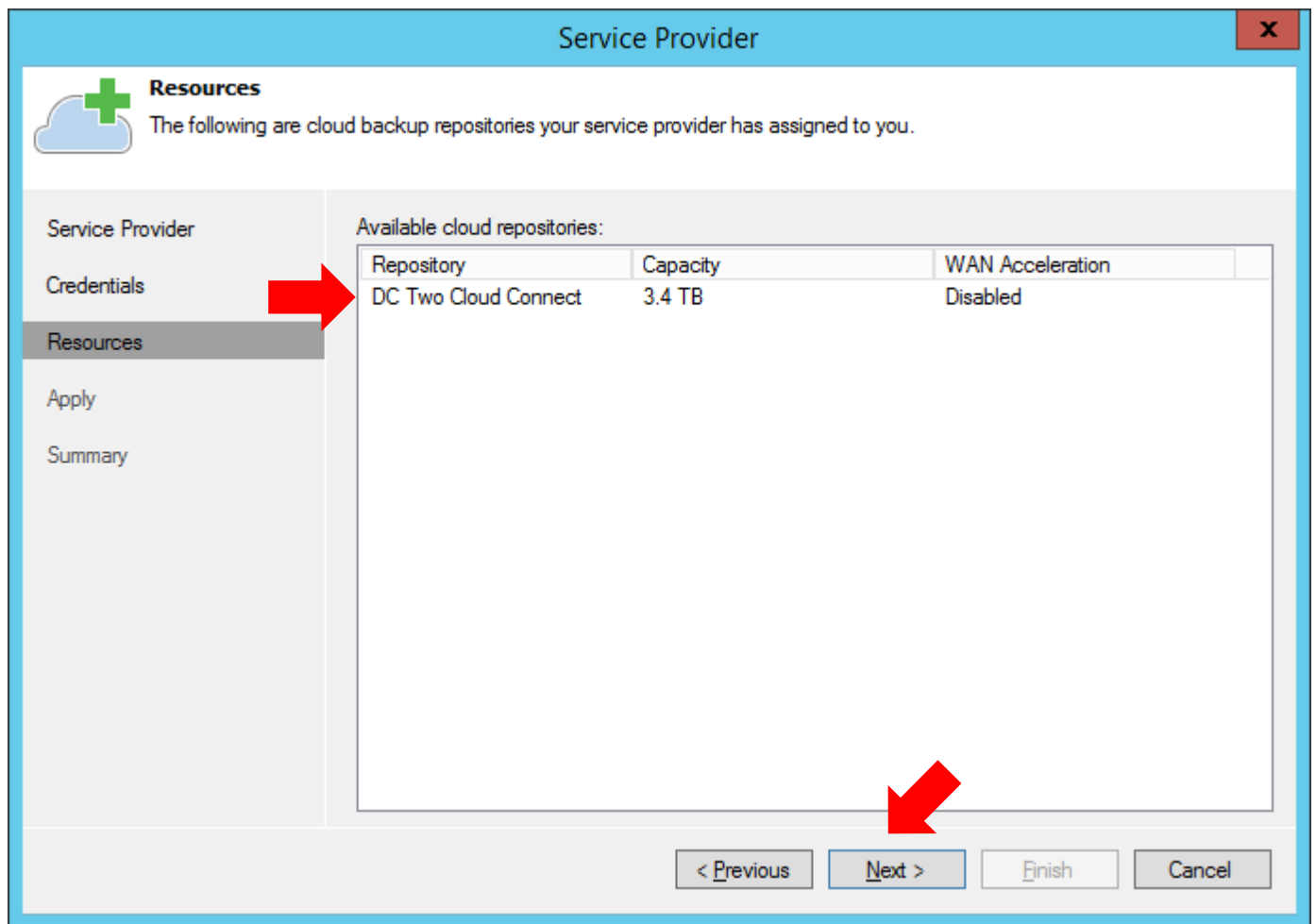
- Service Provider:** cloudconnect.dctwo.com.au
- Verified by:** CN=RapidSSL SHA256 CA - G3, O=GeoTrust Inc., C=US
- Thumbprint for certificate verification:** Certificate is verified by third party.
- Credentials:** Username (Username to connect to the DC Two VCC platform)

Buttons: < Previous, Next >, Finish, Cancel. A red arrow points to the 'Next >' button.

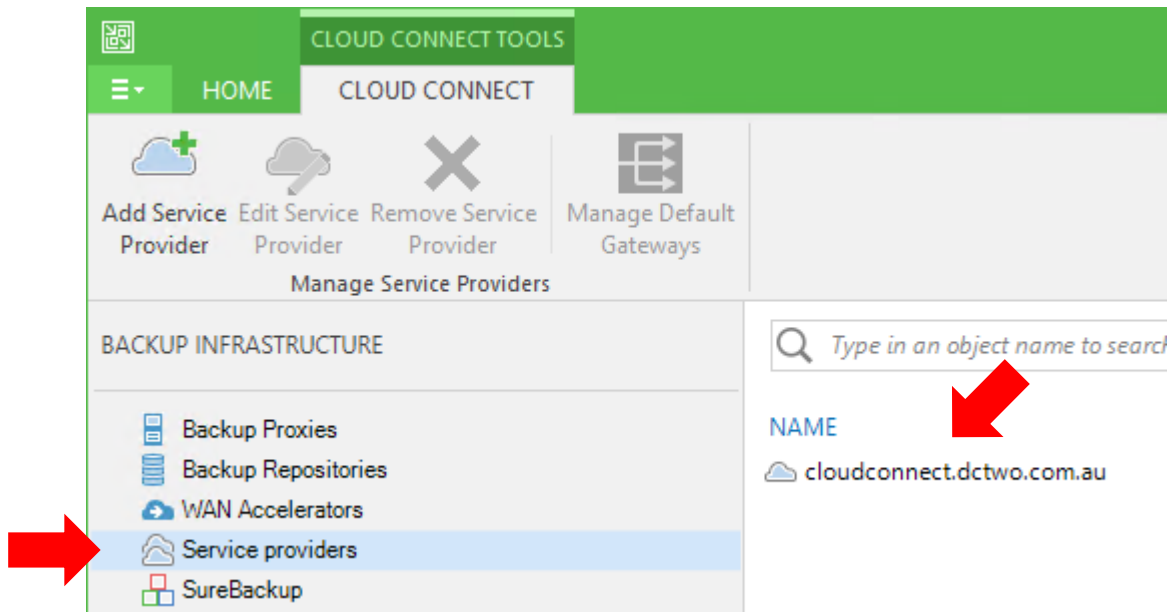
6 – Veeam will then use the details and credentials provided to establish a connection.



7 – The available cloud repositories will then be displayed. Click “Next” to continue.

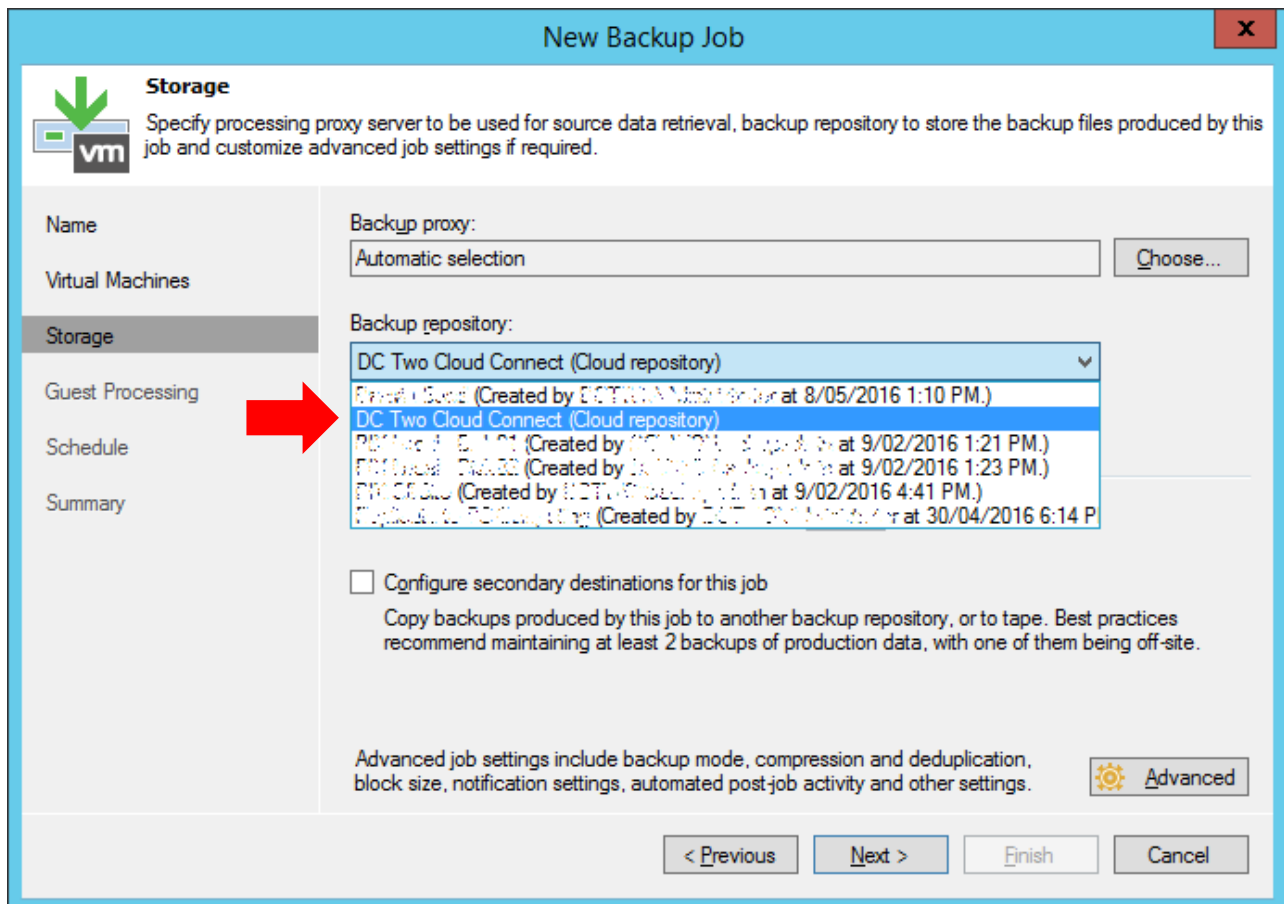


10 – The DC Two Cloud Connect repository will then be displayed as a repository under the Service providers section.



11 – The repository is now ready for use within Veeam as shown below;

PLEASE NOTE – It is **STRONGLY** recommended to use **Backup Copy Jobs** for any off-site or remote backups, **only** use **Backup Jobs** if absolutely necessary.



If you have any problems, issues or additional questions with accessing the DC Two Veeam Cloud Connect platform, please do not hesitate to contact DC Two support via email support@dctwo.com.au or on 08 6141 1011.