



How to use the DC Two VMware vSphere Web Client

(Updated for VMware V6)

The VMware vSphere Web Client is the replacement for the original Windows only VMware vSphere GUI Client. The vSphere Web Client is designed and built to operate within a web browser operating on Windows and Mac OS operating systems only. It also requires the Adobe Flash Player version 11.5.0 or later to be installed with the appropriate plug-in for your browser.

We have found that the vSphere Web Client operates best in Chrome and Firefox web browsers. Chrome is the recommended browser to use and used in this document. Although Internet Explorer (IE) is supported, we have found the use of IE is sometimes problematic and as such, we do not recommend its use.

The DC Two vSphere Web Client for V6 is ONLY accessible via VPN access to the DC Two private network. Due to the feature set demanded for vSphere operations, the Web Client requires almost complete access to the physical VMware hosts, and the only way to do this in a secure fashion was to set up a private “control” network for our clients to authenticate to and use via a VPN.

Before setting up the VPN, its best to download the Console App for VMware. It's available from our local cloud <https://cloud.dctwo.com.au/data/public/1856005b.php>. Also we have the original Vsphere client for V6 ready for download as well (which is being phased out) here <https://cloud.dctwo.com.au/data/public/6794652b.php>.

Install the .MSI first, it usually requires a reboot. Once that's complete, start the VPN to our Osborne Park POP, that's where the VMware 6 Vcenter is running.

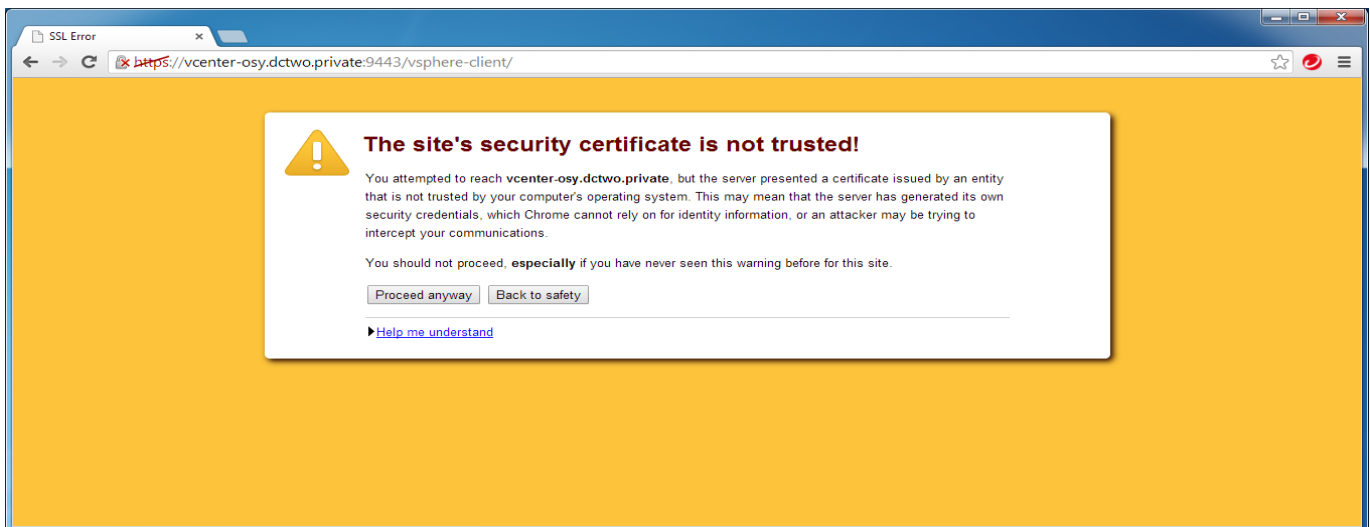
Once the VPN between the client computer and our private network is established, your web client will then have full access to the VMware hosts on this secondary path. The URL for access is <https://vc.pth.dctwo.com.au/vsphere-client/> in the web browser client, OR vc.pth.dctwo.com.au in the original client.

The web browser or client will immediately notify you that “The site's security certificate is not trusted”.

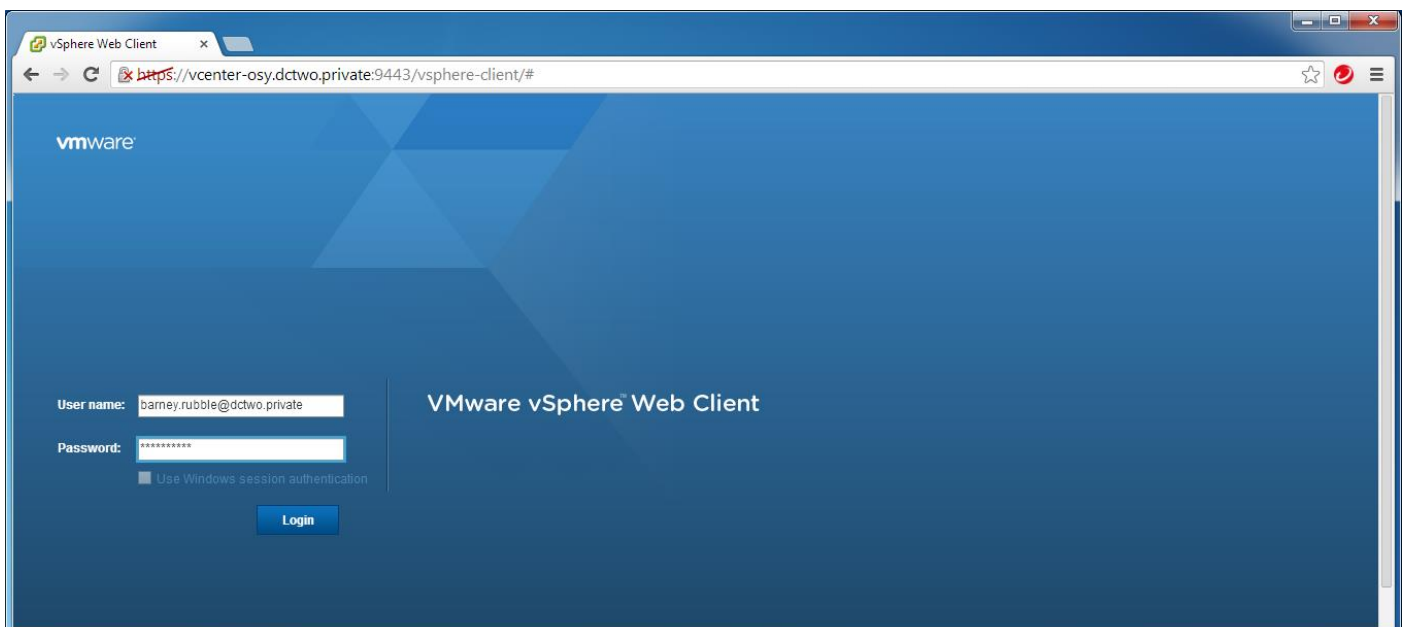
This is expected and normal.

The DC Two vSphere Web Client is secured within a private network and private network space. Public ‘trusted’ Security Certificates cannot be issued for use within private network space.

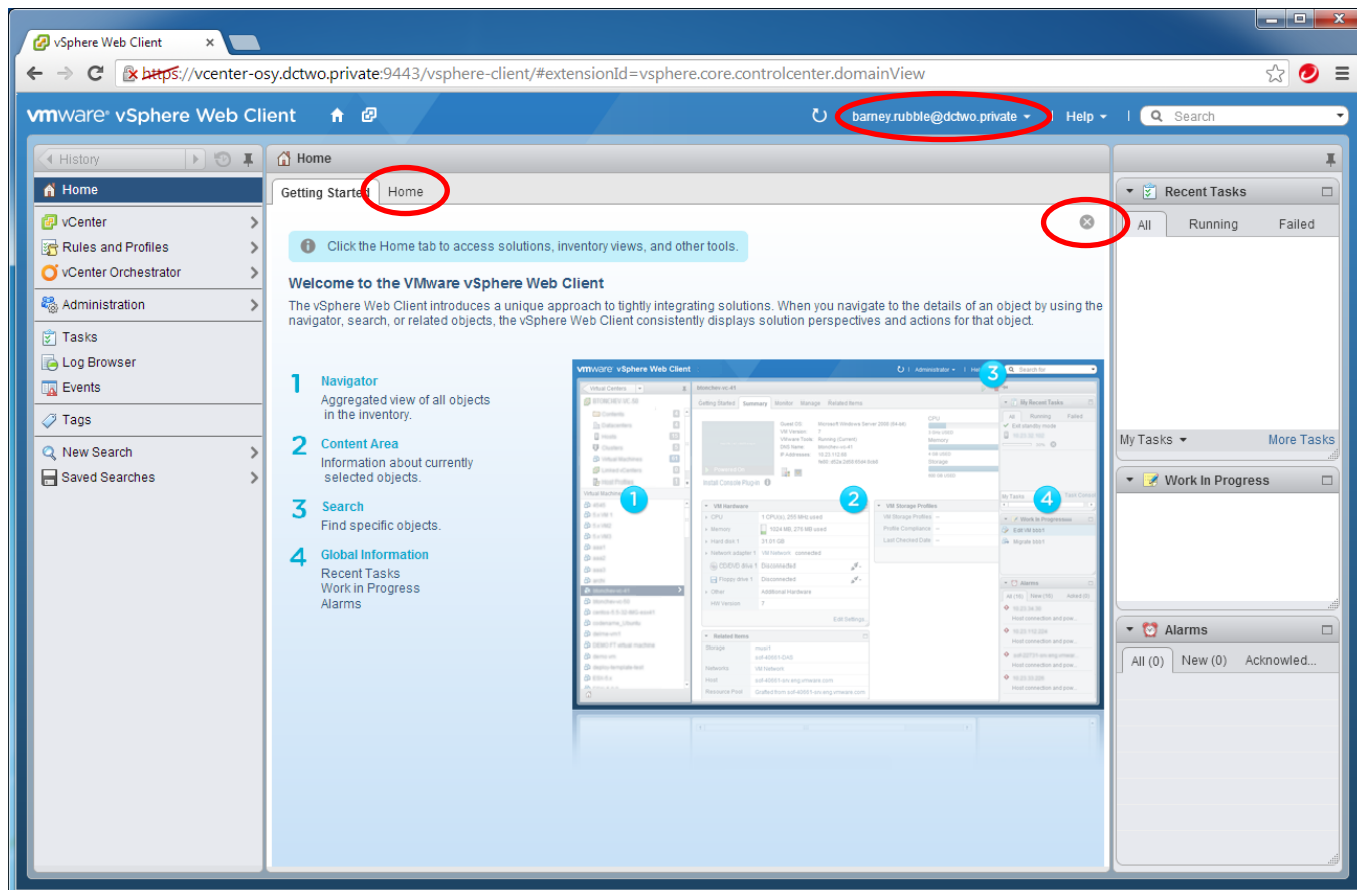
Click “Proceed anyway” to continue.



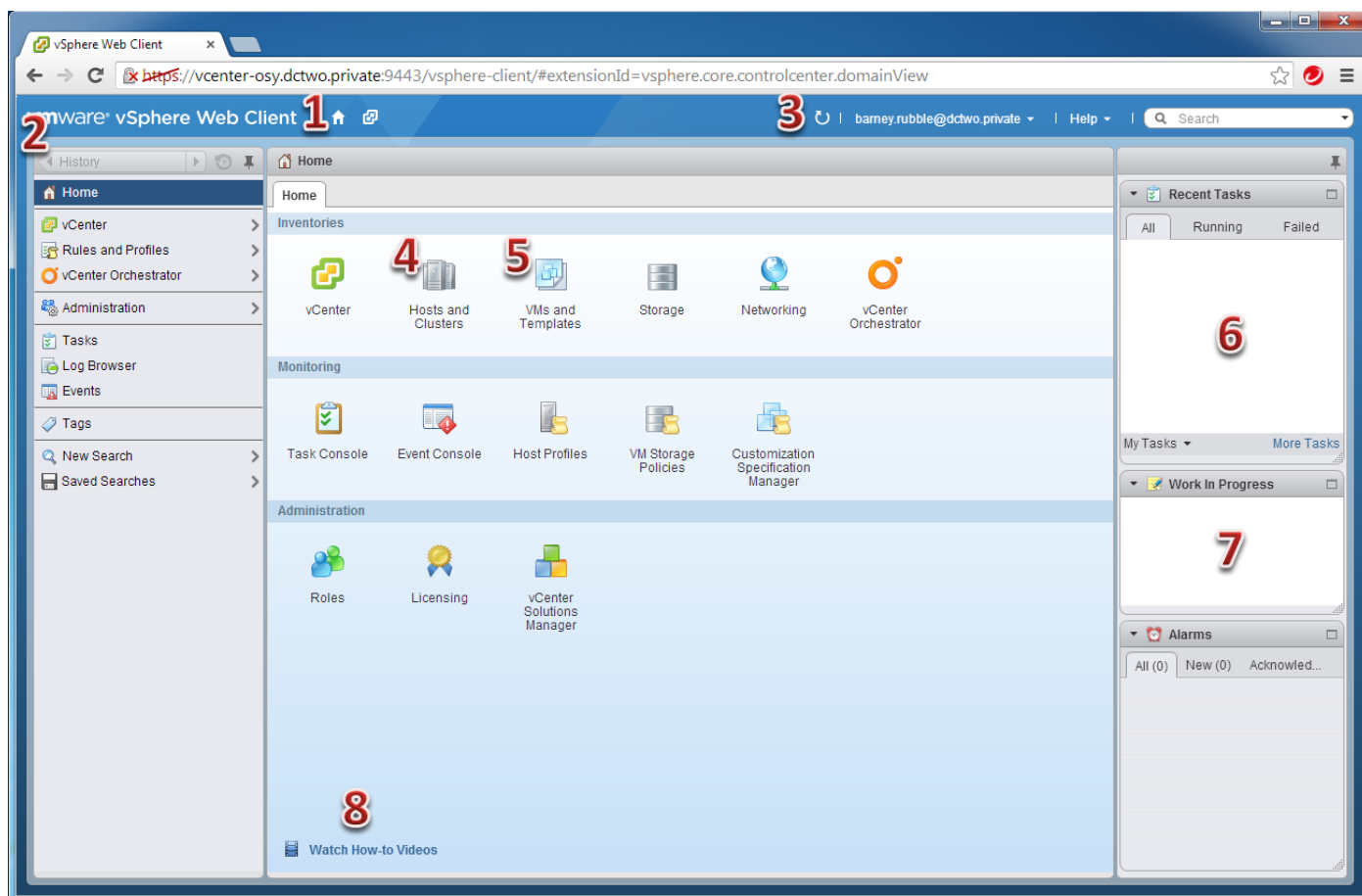
You will now be able to login to the vSphere Web Client with your DC Two Web Services Portal username and password.



Welcome to DC Two’s VMware vSphere Web Client. You will immediately land on the “Getting Started” page. We would recommend that you spend a little time familiarising yourself with the new Web Client. It is very intuitive and has many hyperlinks to related objects that the old application client does not have. You may wish to head directly to the “Home” tab and perhaps even permanently close the “Getting Started” tab.



The below is an outline of the key sections and functions within the Web Client that you will be needing to access and have access to and will want to use or be aware of;



1 – Home – This will take you back to this Home page/tab

2 – Back – This will take you back to the previous screen/page you were on

3 – Refresh – We find that occasionally you need to click the 'Refresh' button to update the details and icons that are displayed on the screen. Sometimes when servers are powered on/off and/or details change, the information displayed on the screen is not always refreshed as would normally be expected. This can be a little frustrating but a quick click of the refresh button resolves any outstanding screen updates.

4 – Hosts and Clusters – The main area where you will control and access your virtual machines and initiate Console screen access

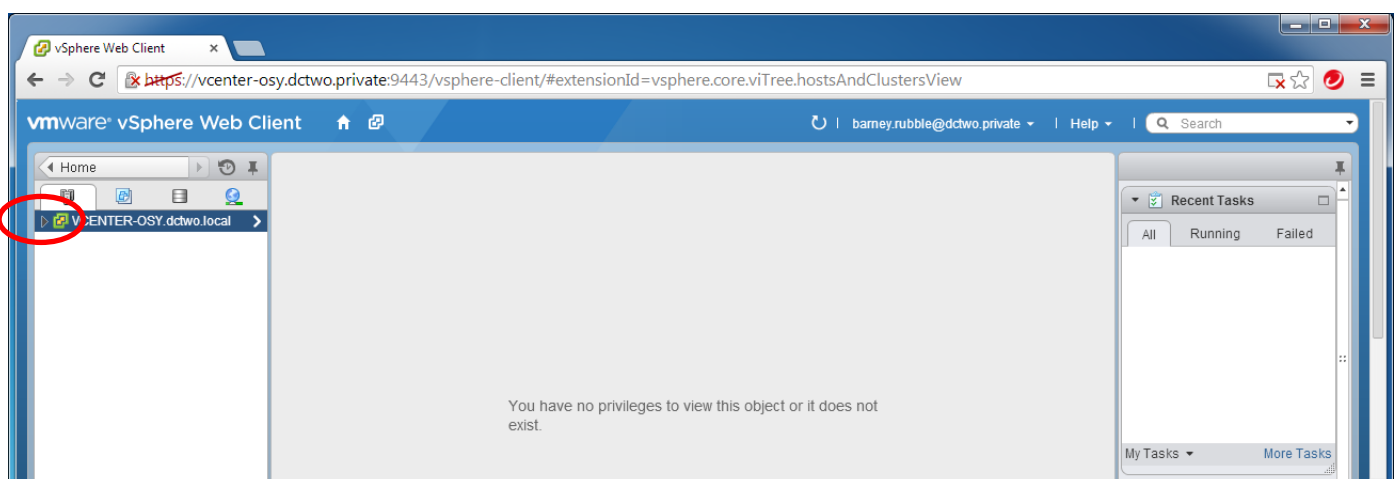
5 – VMs and Templates – Very similar view and functions as Hosts and Clusters.

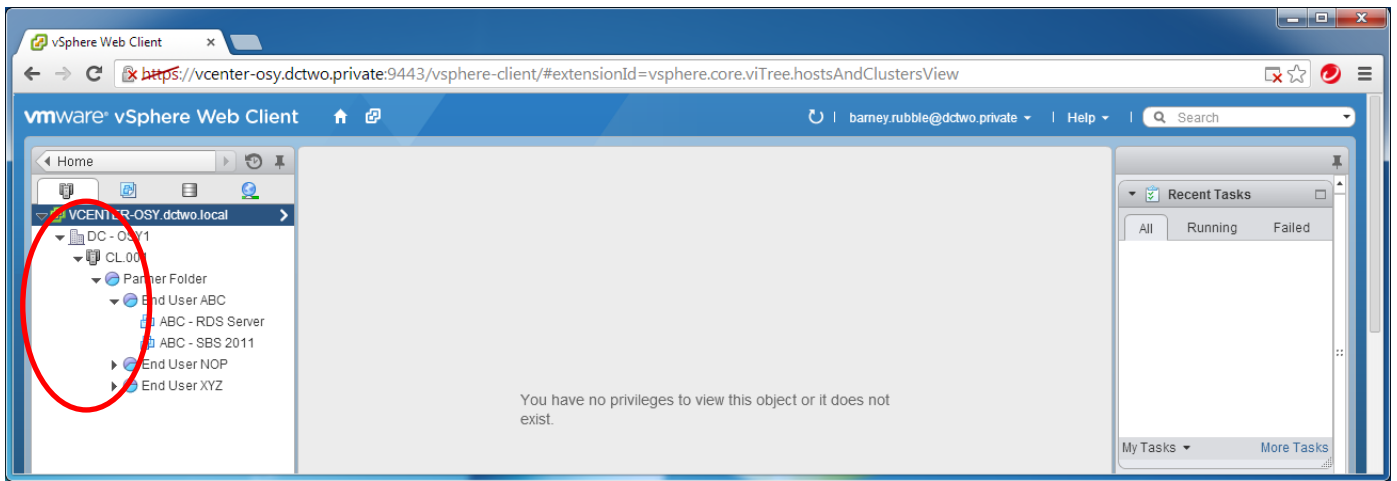
6 – Recent Tasks – Will display any recent tasks you have initiated

7 – Works in Progress – Any 'action' screens can be collapsed, or minimised into the Works in Progress section to be accessed again at a later stage. This is a very handy new feature.

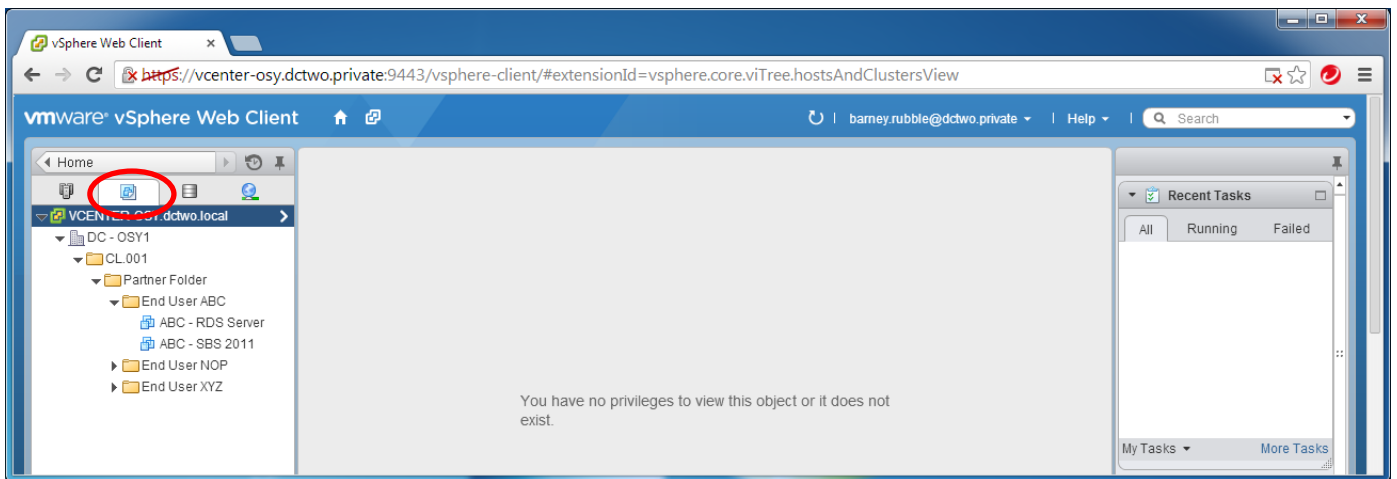
8 – Watch How-to Videos – Very Handy link to VMware videos.

The Hosts and Clusters screen will open and tree showing all the items will be collapsed to begin with. Click with your mouse to expand the tree view until you can see your folders and virtual machines as shown below.

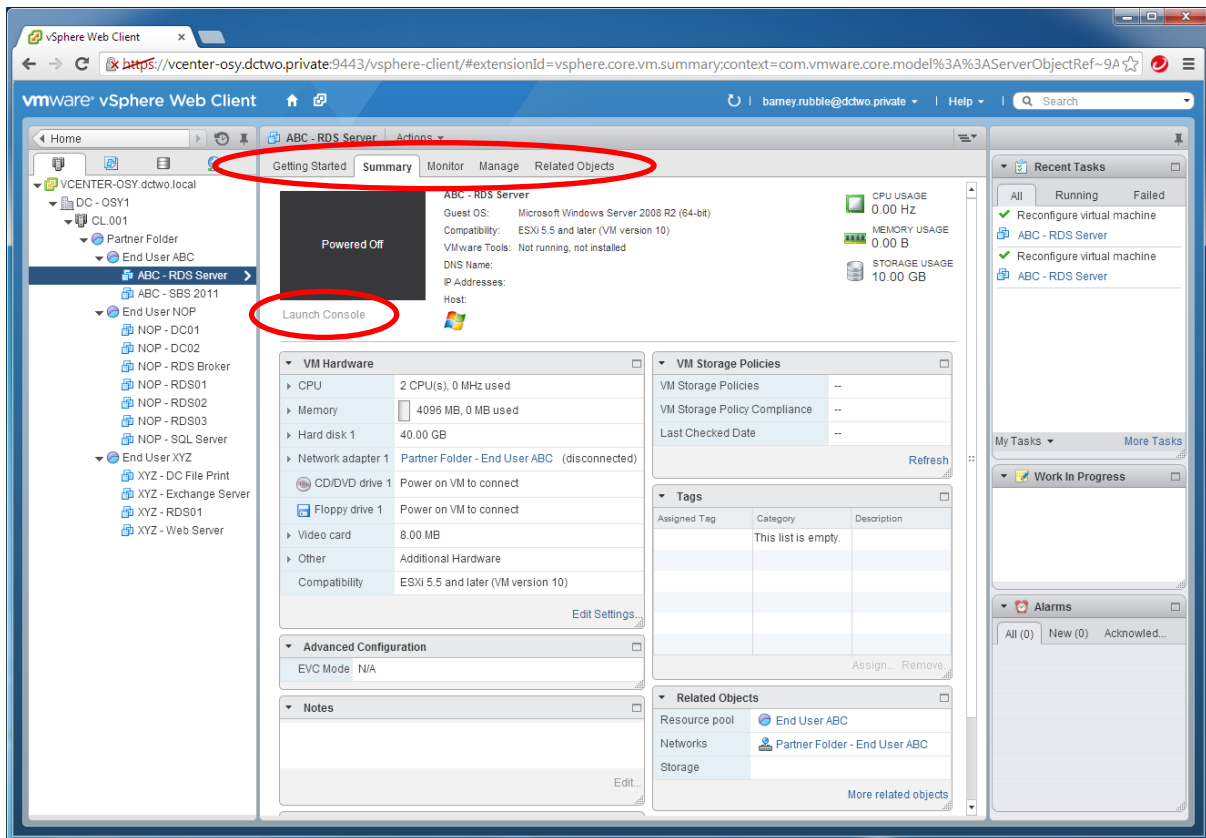




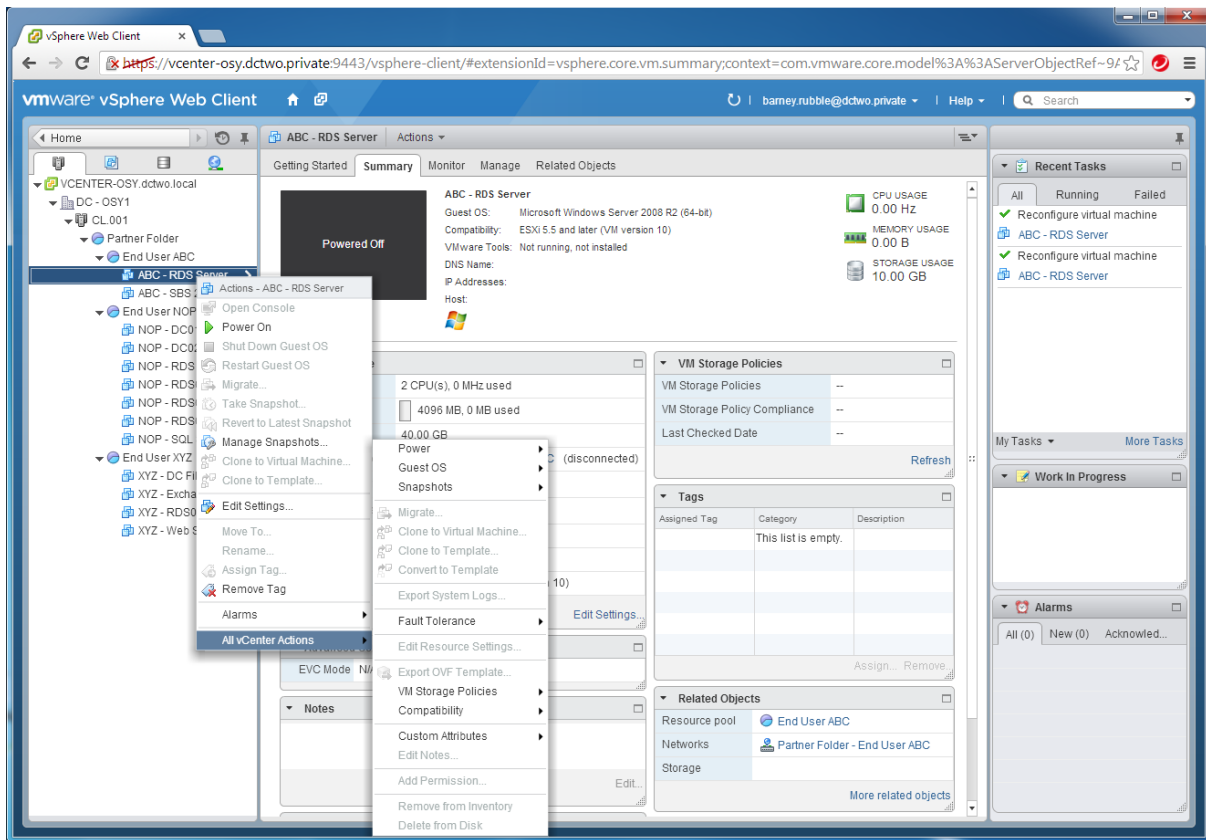
As you can see below, the VMs and Folders view is laid out and displayed in an almost identical way as the Hosts and Clusters view.



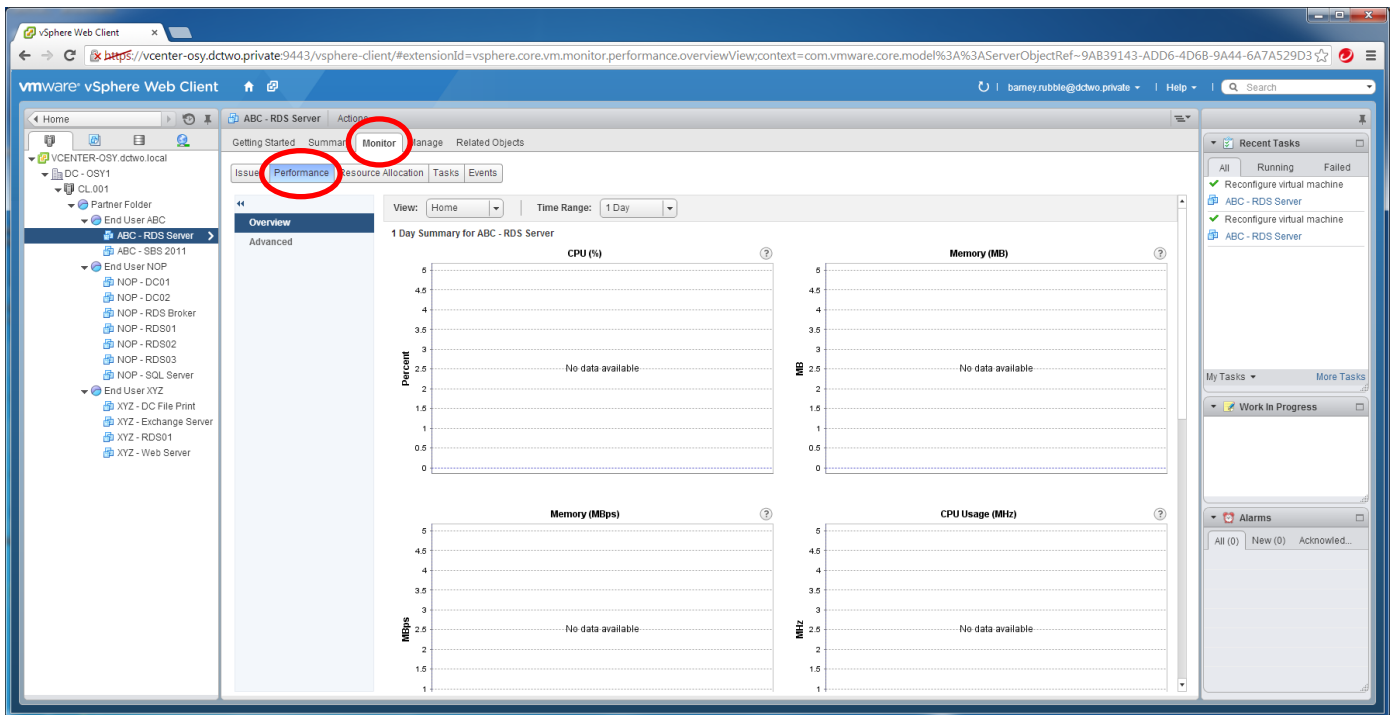
Item View – To view an individual item such as a Resource Pool, Folder or Virtual Machine, click on the individual item in the left hand list. The below shows the Summary screen for a Virtual Machine. Please note the “Launch Console” link and the tabs along the top of the screen



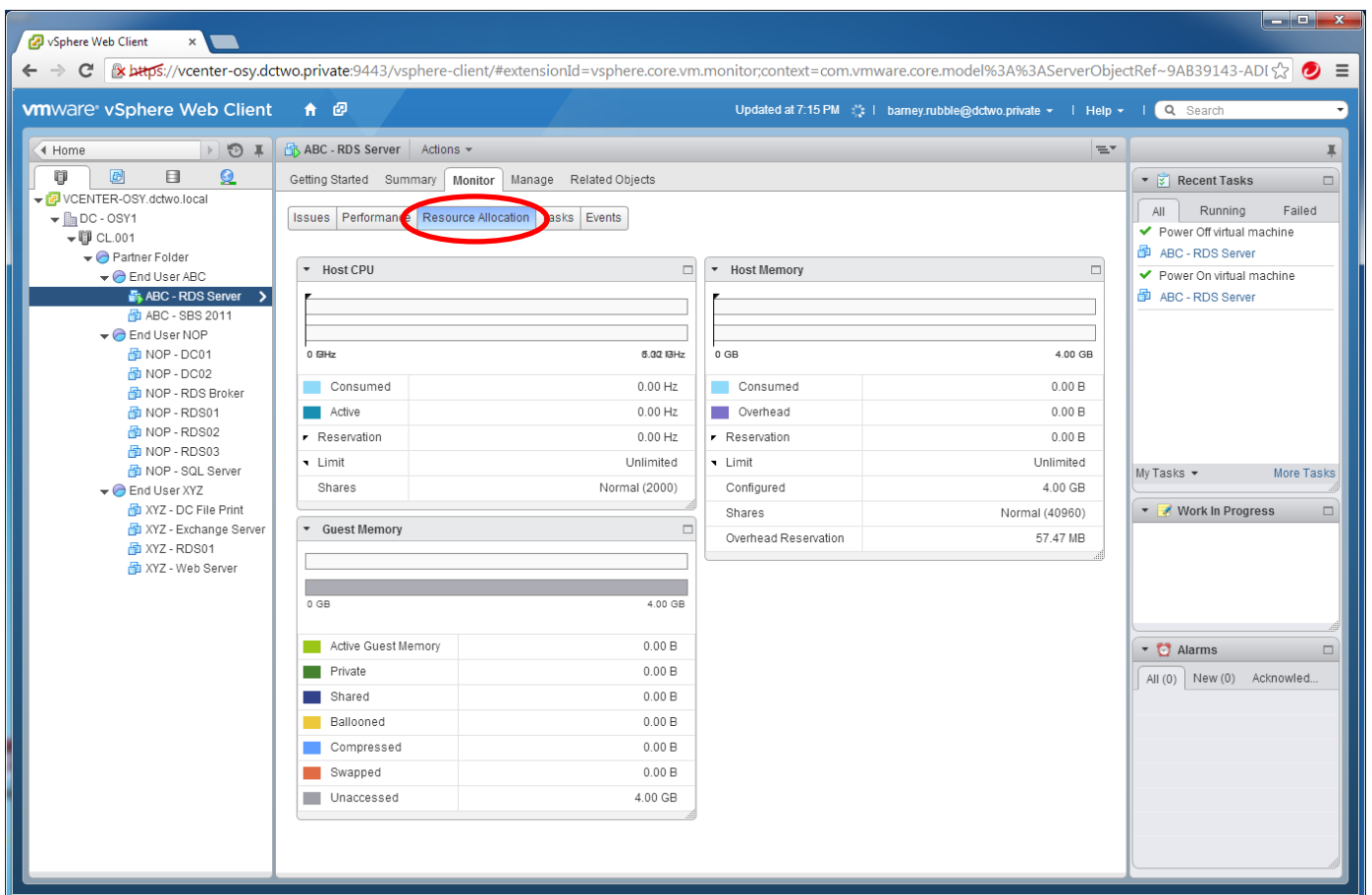
To perform functions on the items, right mouse click to show the pop up menu.



The monitor tab will give you access to performance graphs;

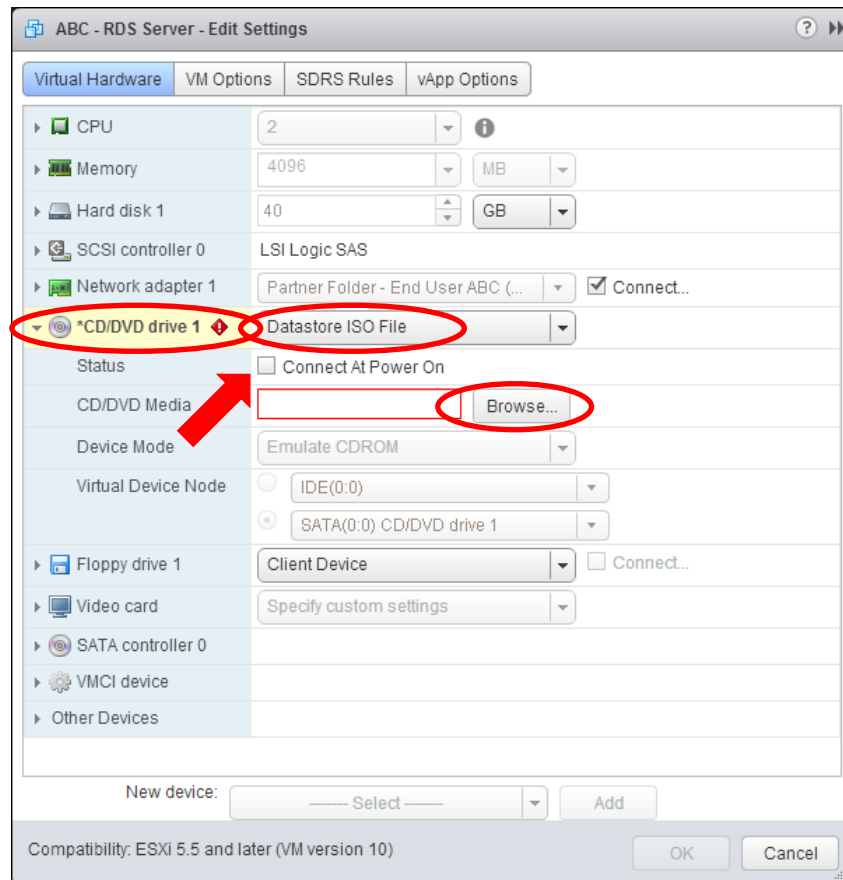


and current Resource usage and allocation for the machine.

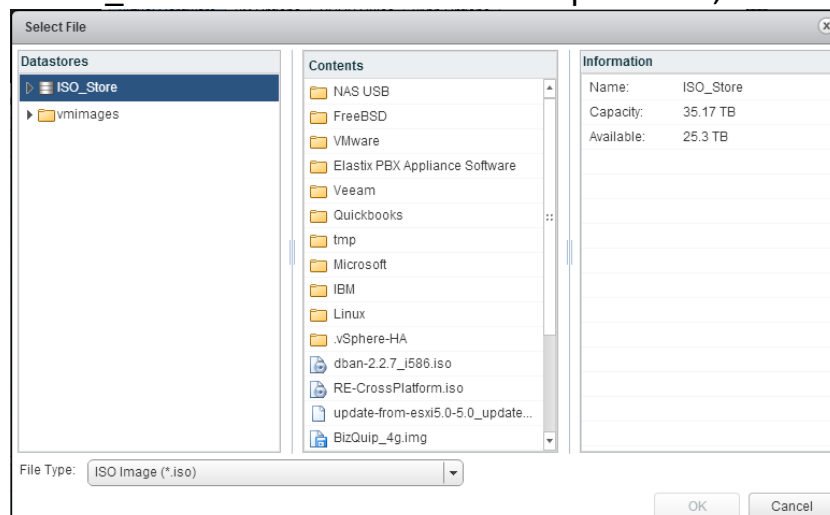


How to add/change an ISO image attached to the virtual machine

- a - Right click on the virtual machine to display the pop-up menu
- b - Select “Edit Settings”
- c - Expand the CD/DVD drive option, select Datastore ISO File then click “Browse”. Also ensure that you click the “Connect At Power On” or Connect tick box



- d - Select the “ISO_Store” then browse to the required file, then OK, OK



If you have any problems, issues or additional questions with accessing the VMWare Web Client, please do not hesitate to contact DC Two support via email support@dctwo.com.au or on 08 6141 1011.